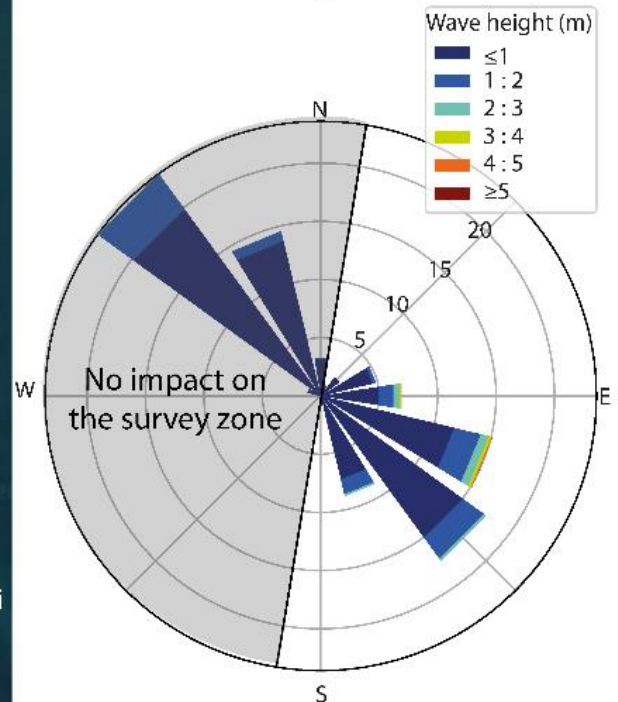
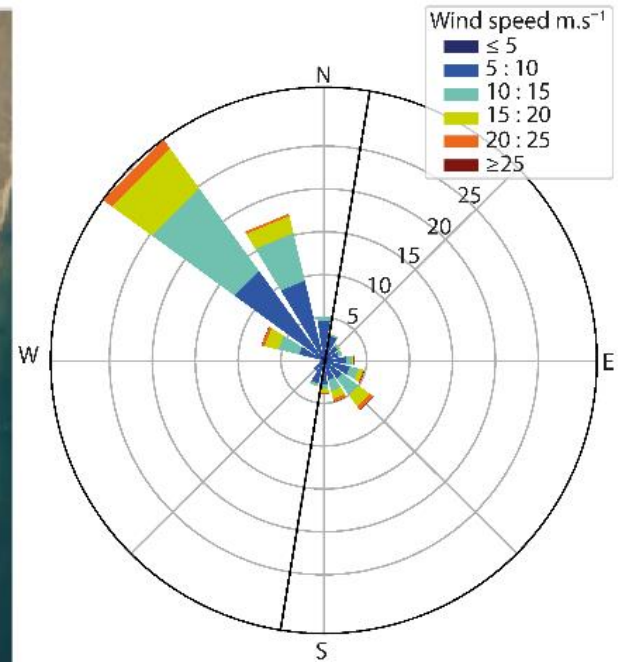
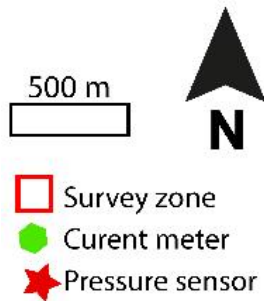
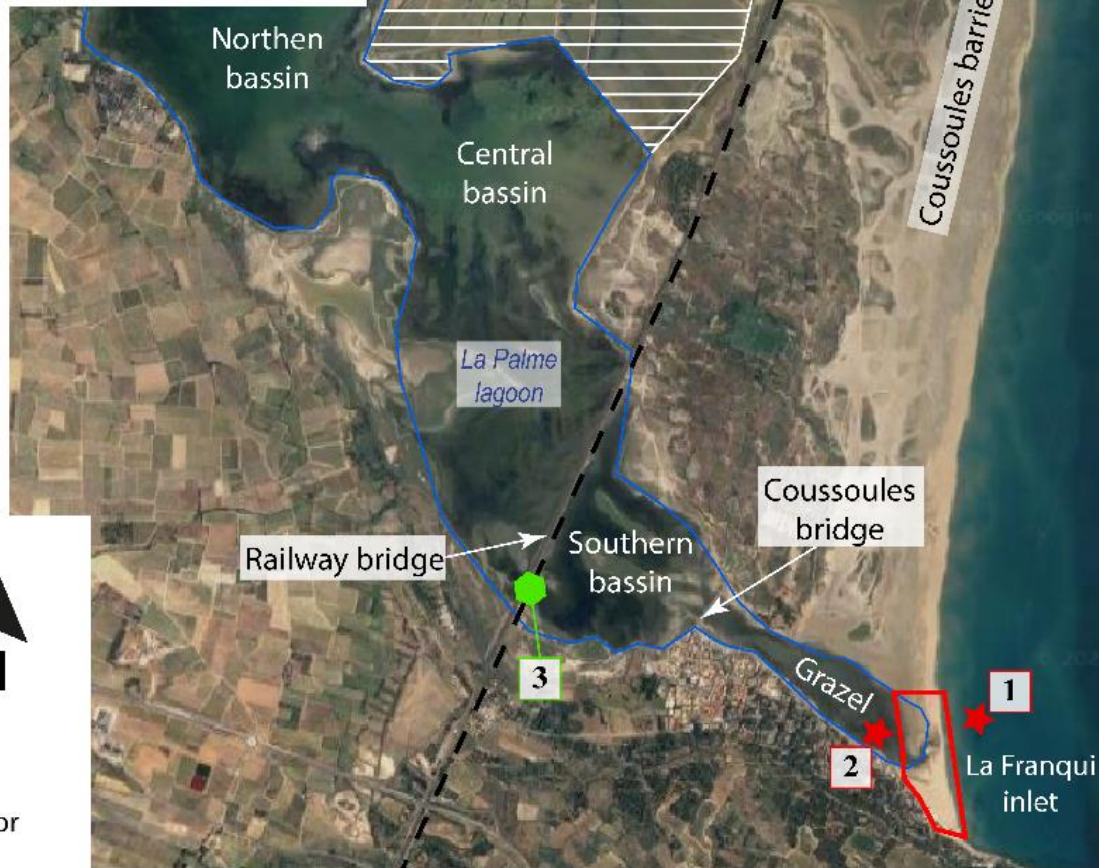


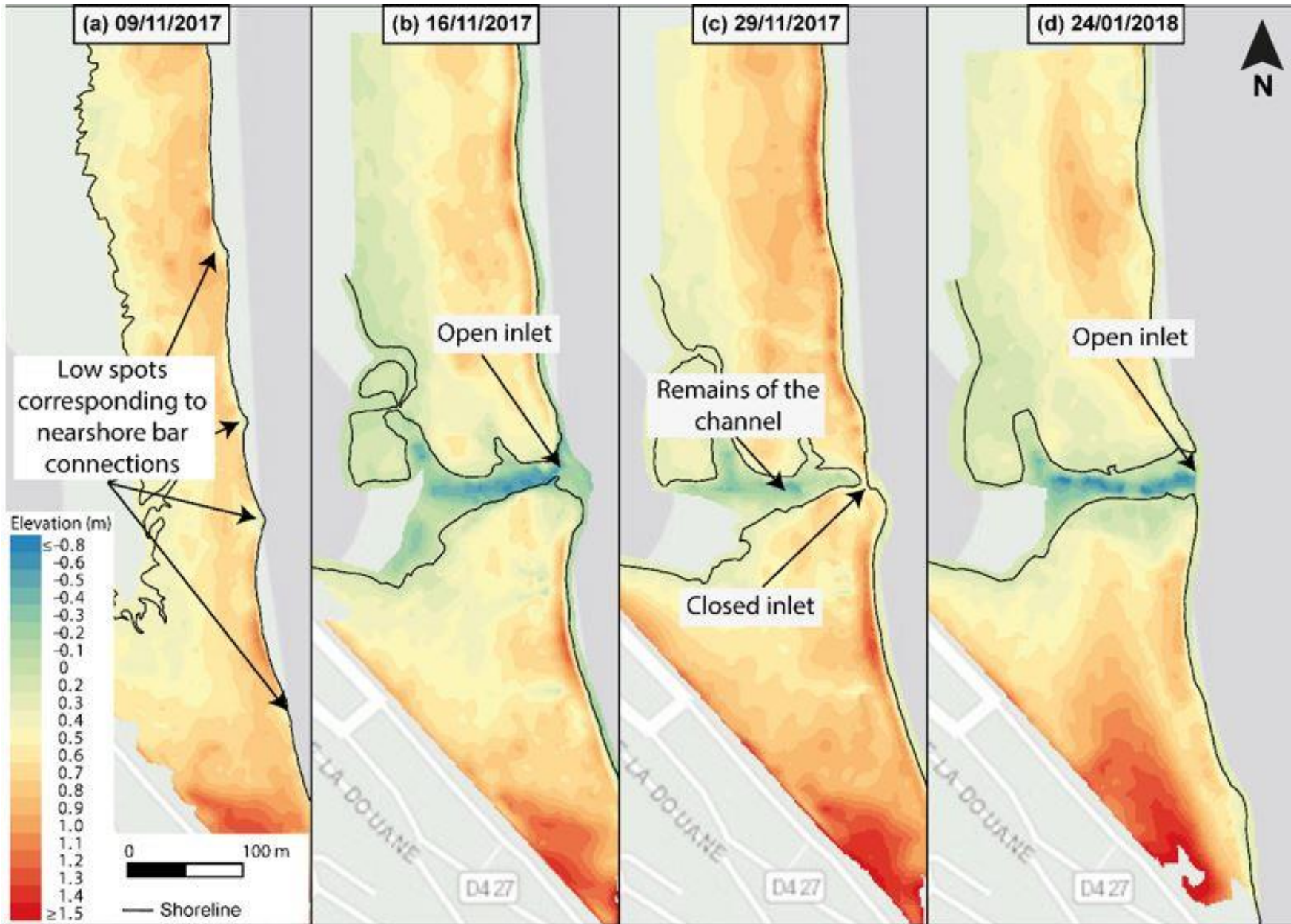
<https://www.dynalit.fr/>

Contact: nicolas.robin@univ-perp.fr

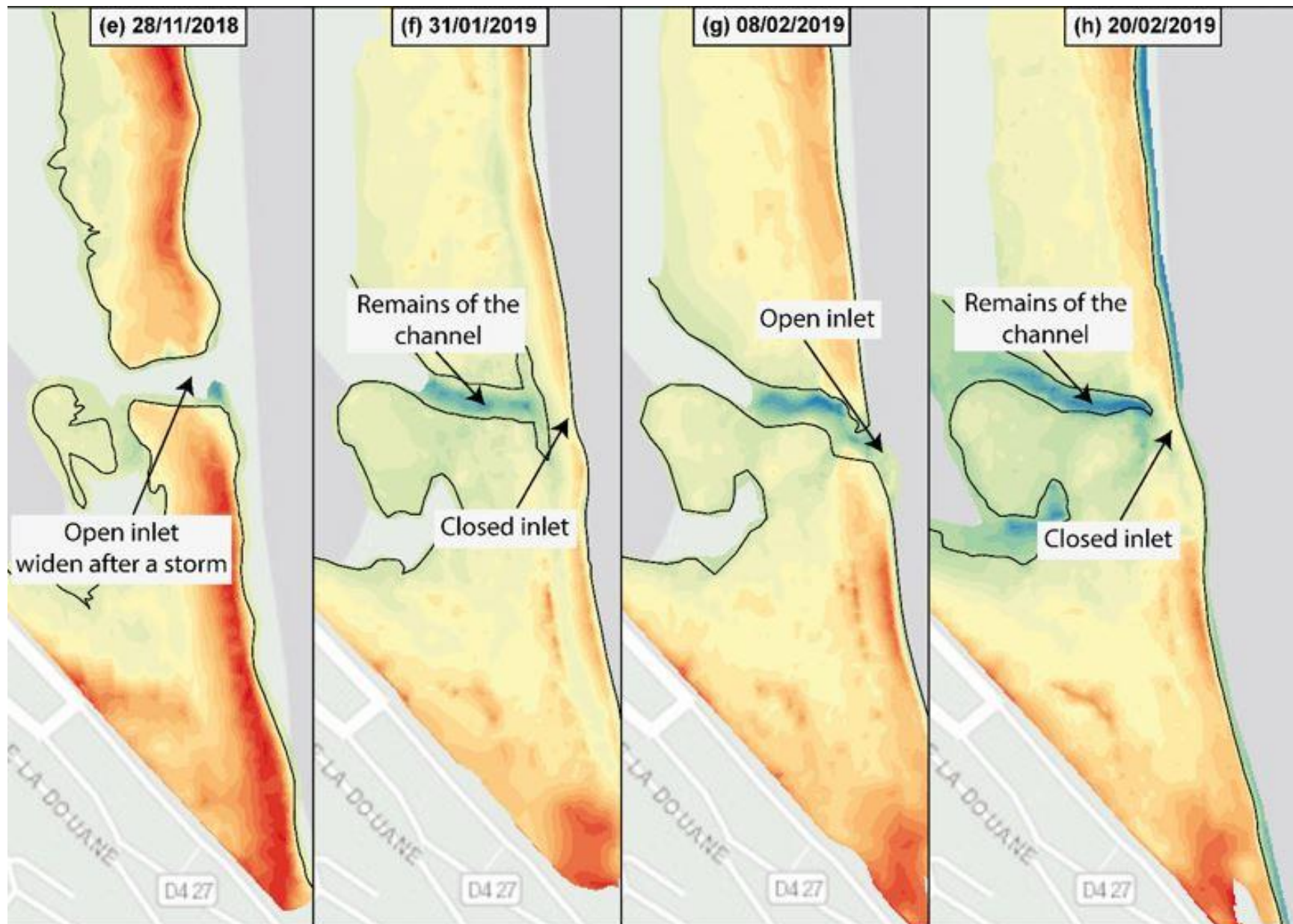
Morphodynamic Behaviour of a Mediterranean Intermittent Estuary with Opening Phases Primarily Dominated by Offshore Winds (Feysat et al., in press)



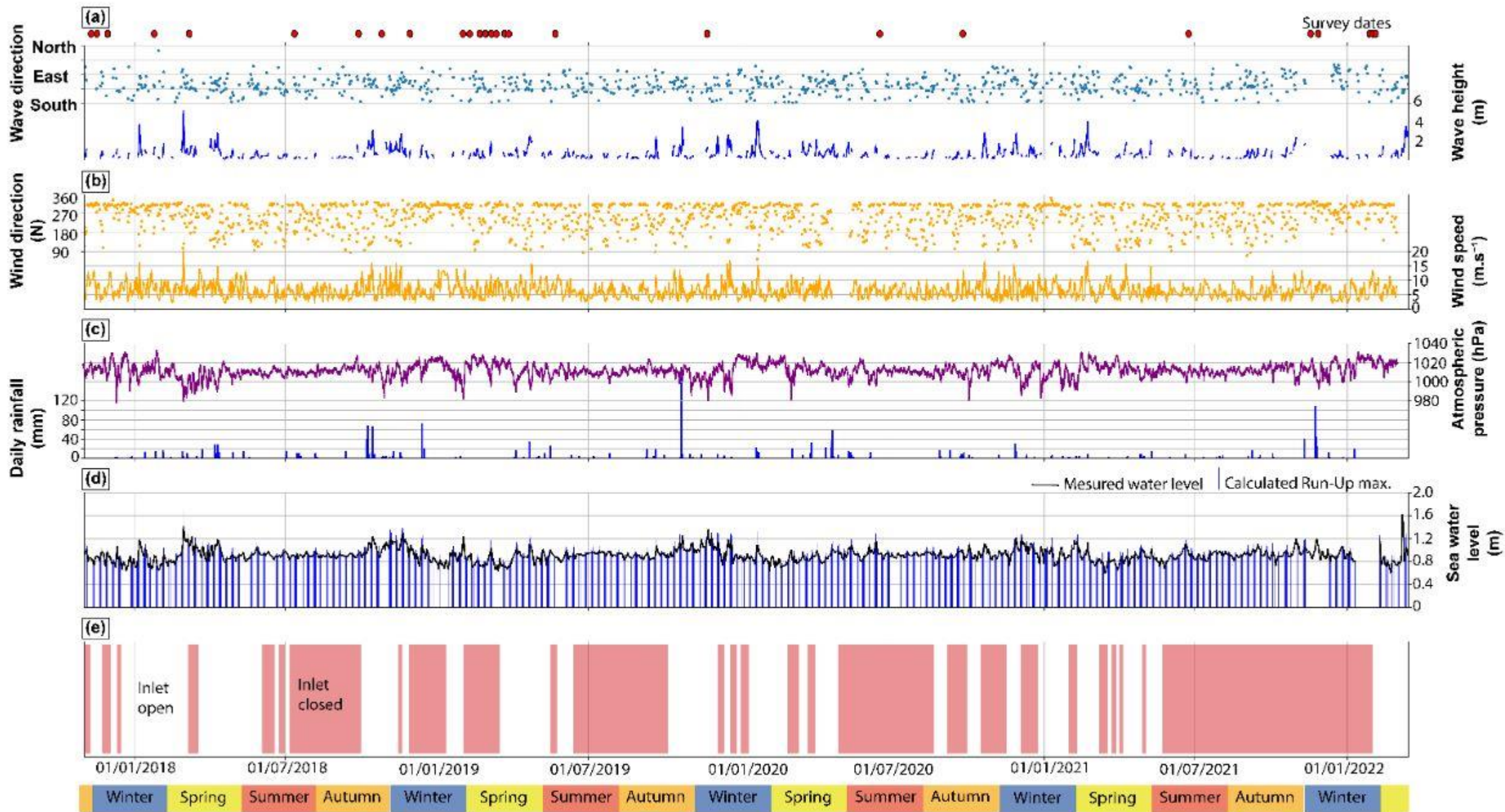


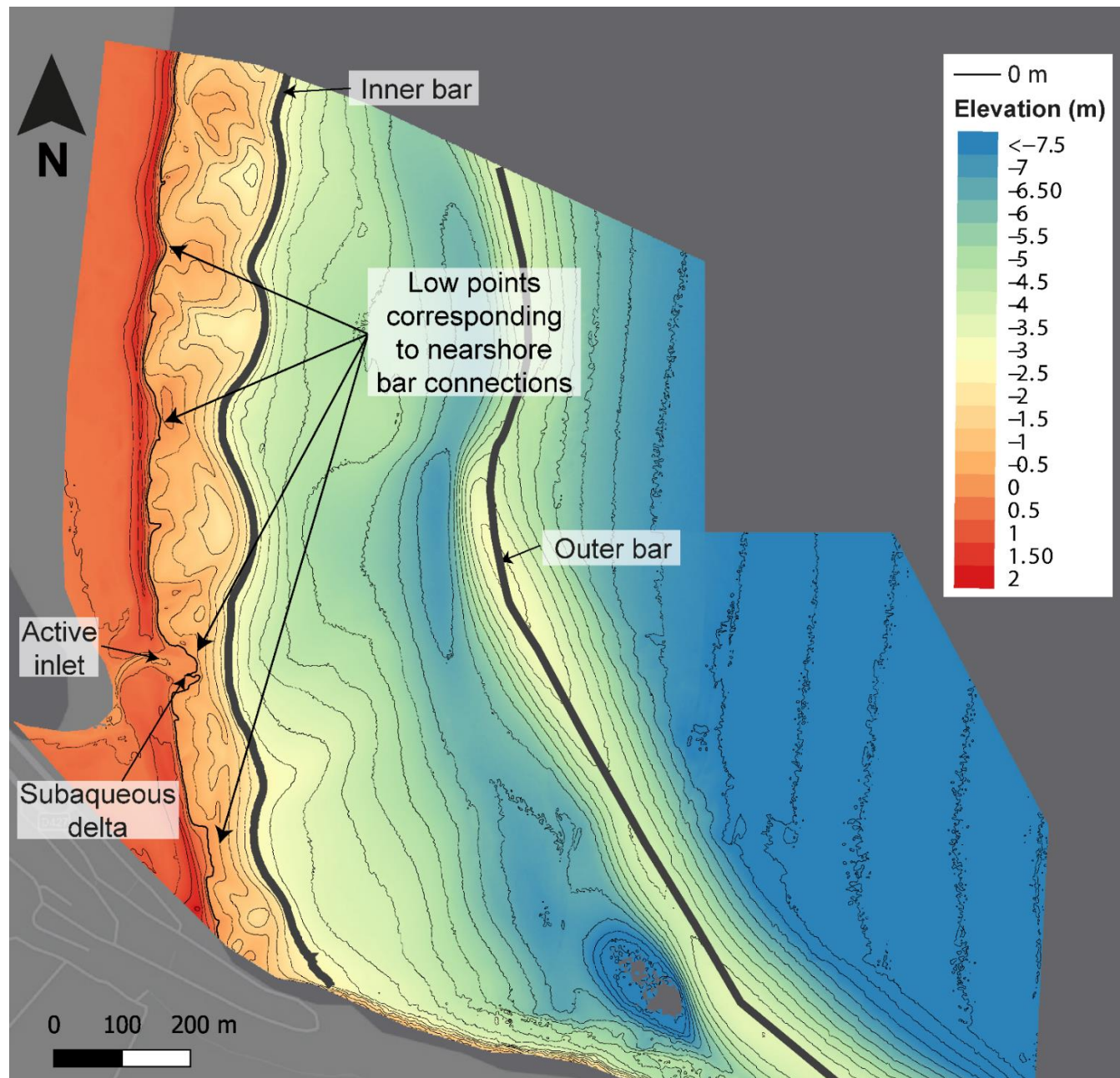


Inlet dynamics over the winter periods of 2017/2018 and 2018/2019

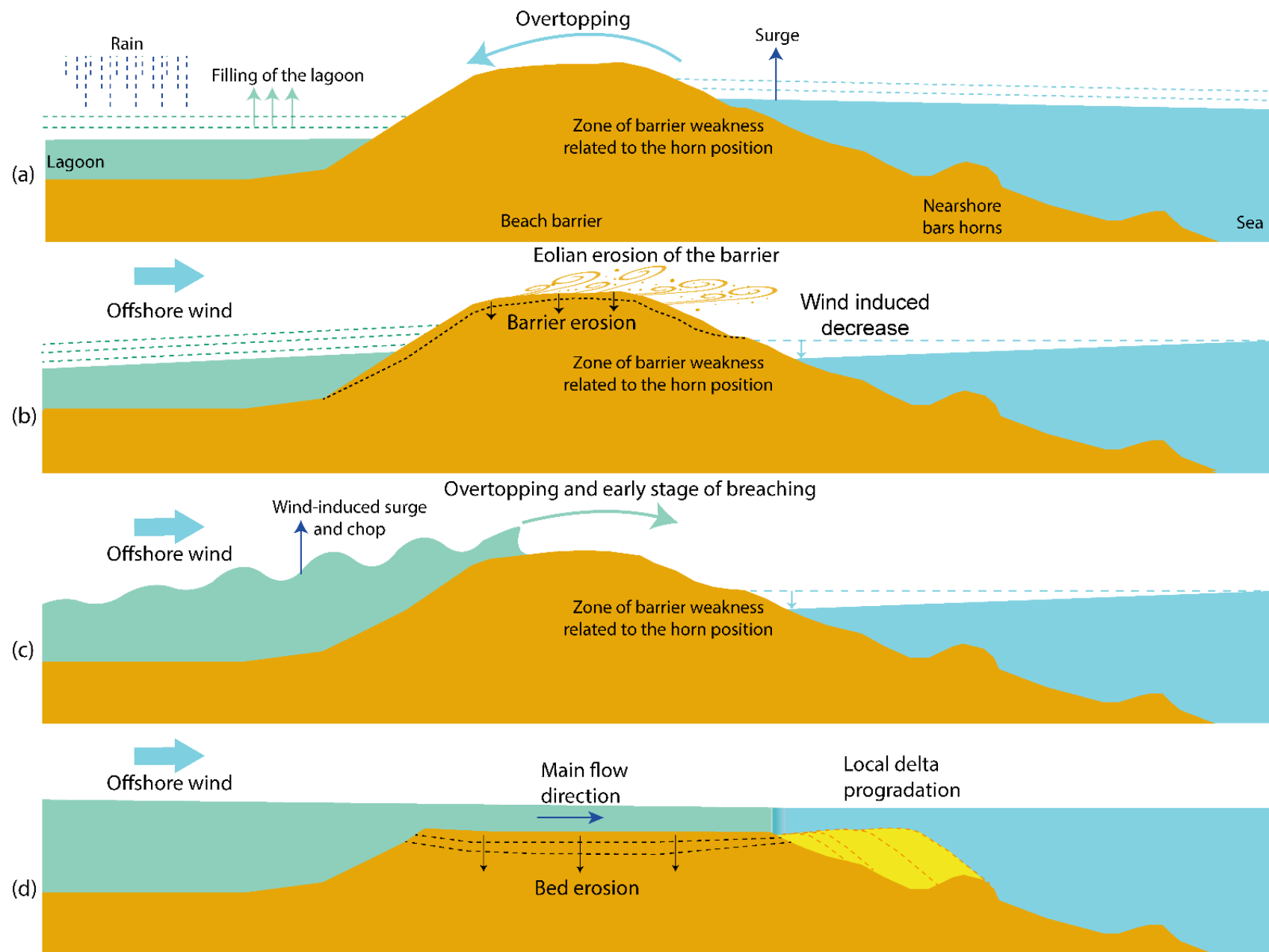


Inlet dynamics over the winter periods of 2017/2018 and 2018/2019

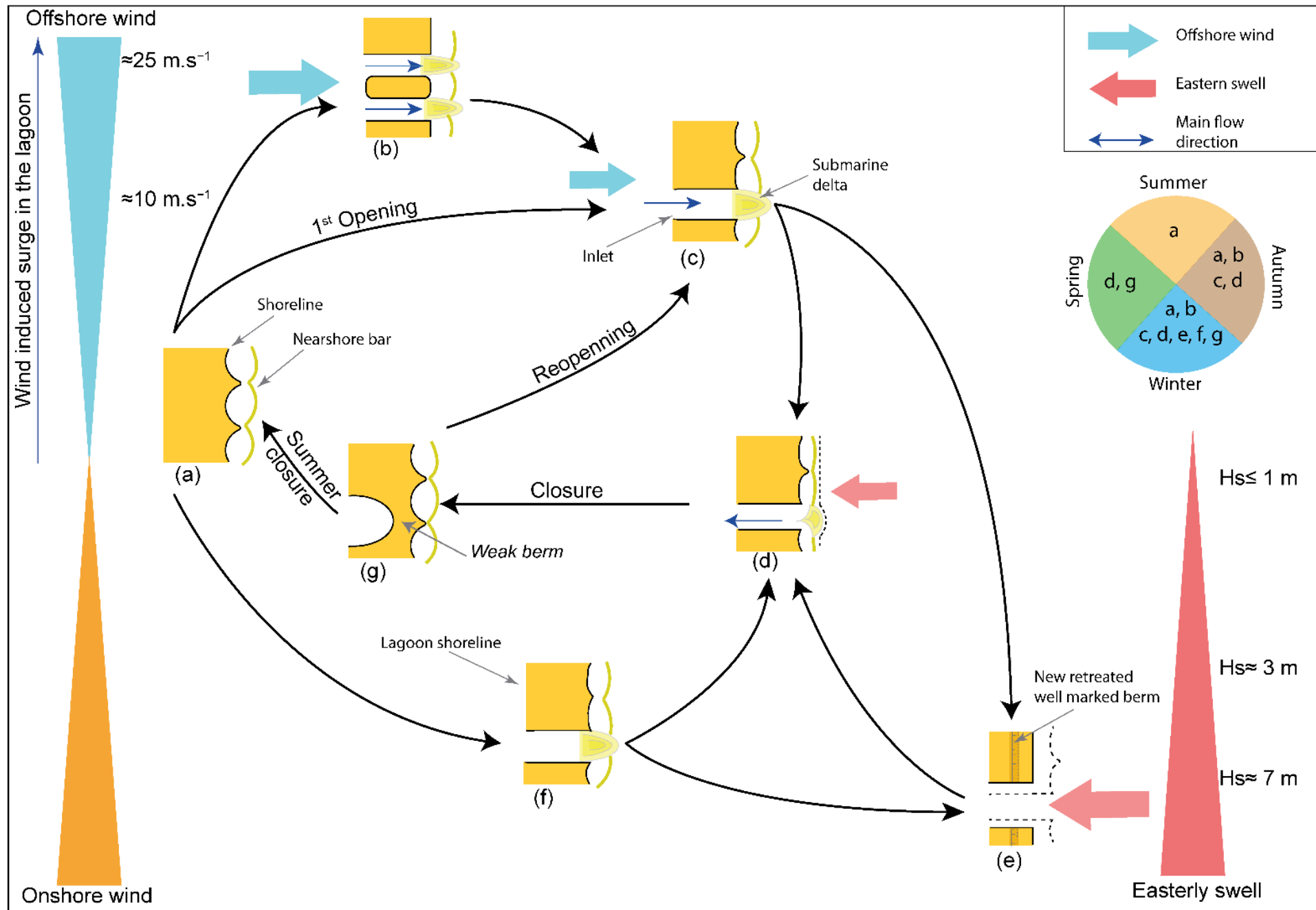




Influence of low points on the beach due to nearshore bar connections



Sectional diagram of the opening mechanisms during periods of strong offshore wind



Morphodynamic model of an intermittent microtidal inlet