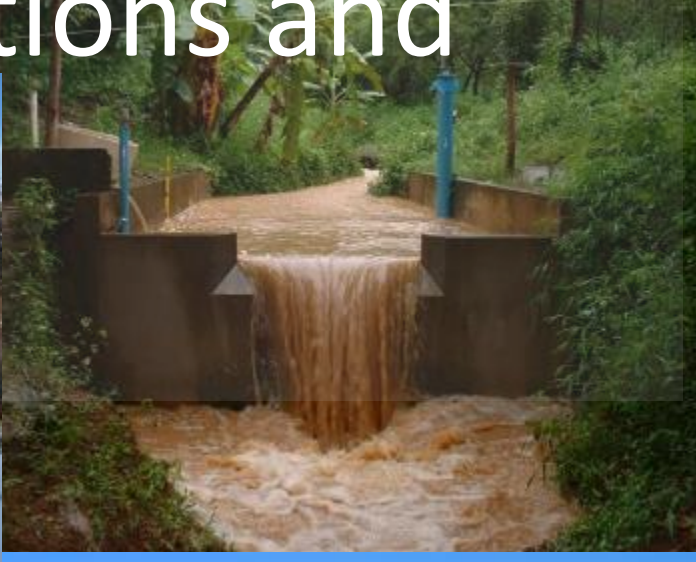


OZCAR-RI French Critical Zone Observatories network – Applications and Research



Jérôme Gaillardet, IPGP, Paris
Isabelle Braud, Inrae, UR RiverLy, Lyon
Virginie Entringer, IPGP, Paris



1st International Scientific Committee
June 21 2021

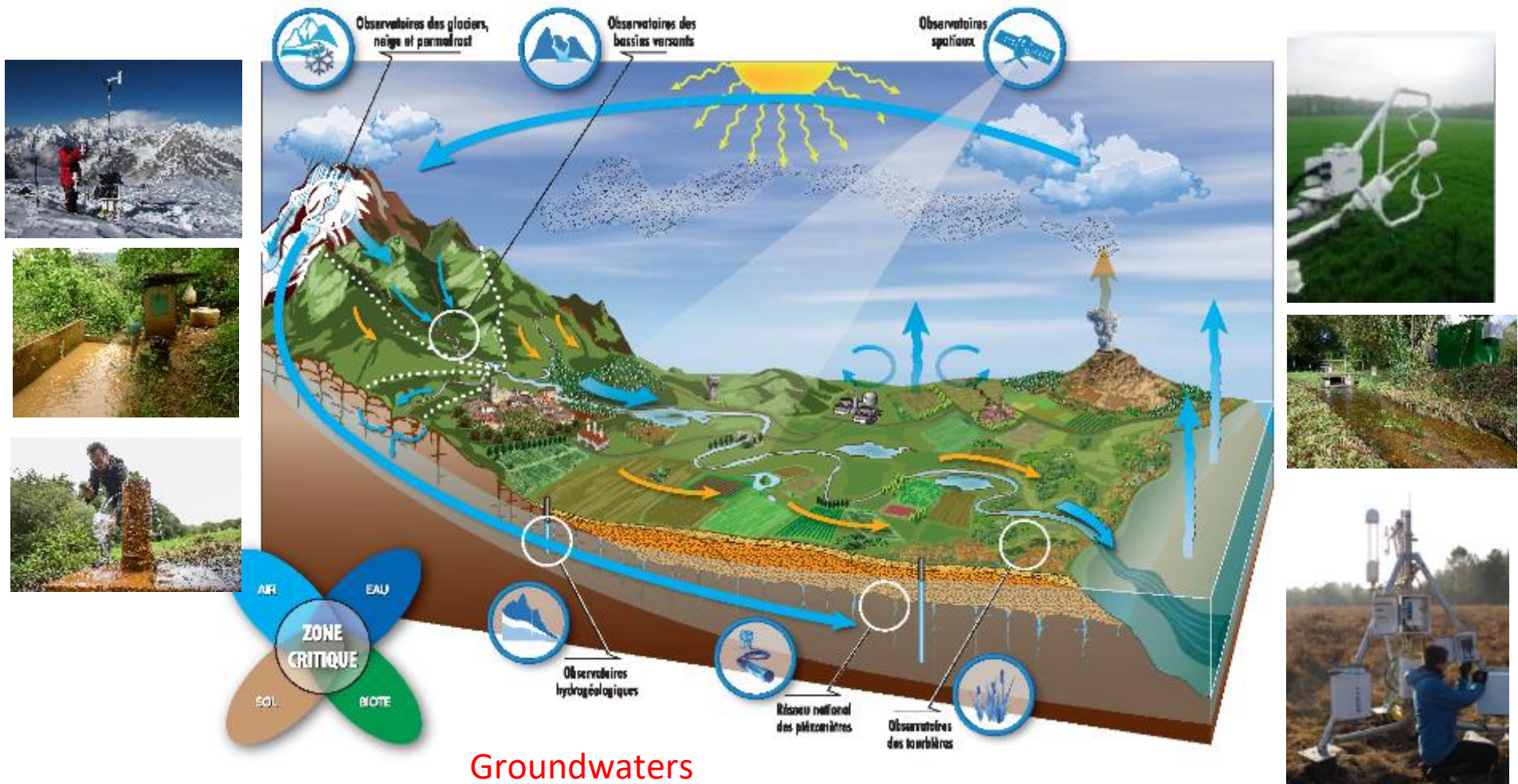


OZCAR-RI : a network of highly instrumented long-term sites

Cryosphere

Catchments

Remote sensing



Groundwaters

Peatlands



<http://www.ozcar-ri.org/>

Gaillardet et al., VZJ, 2018

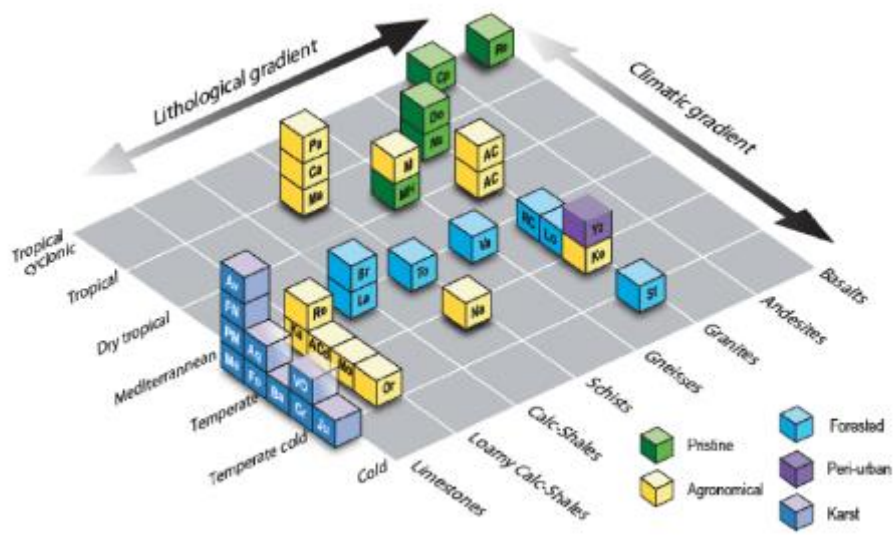
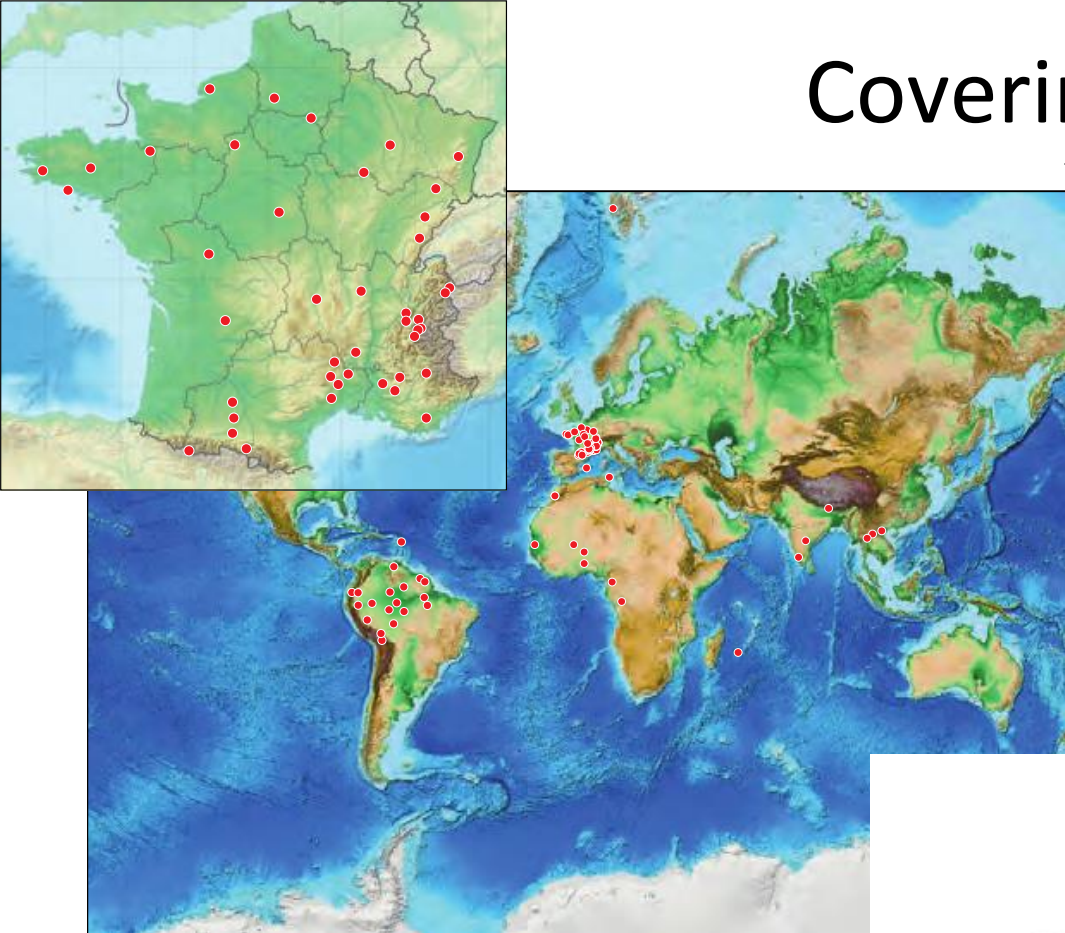


OZCAR-RI: a network of 21 observatories

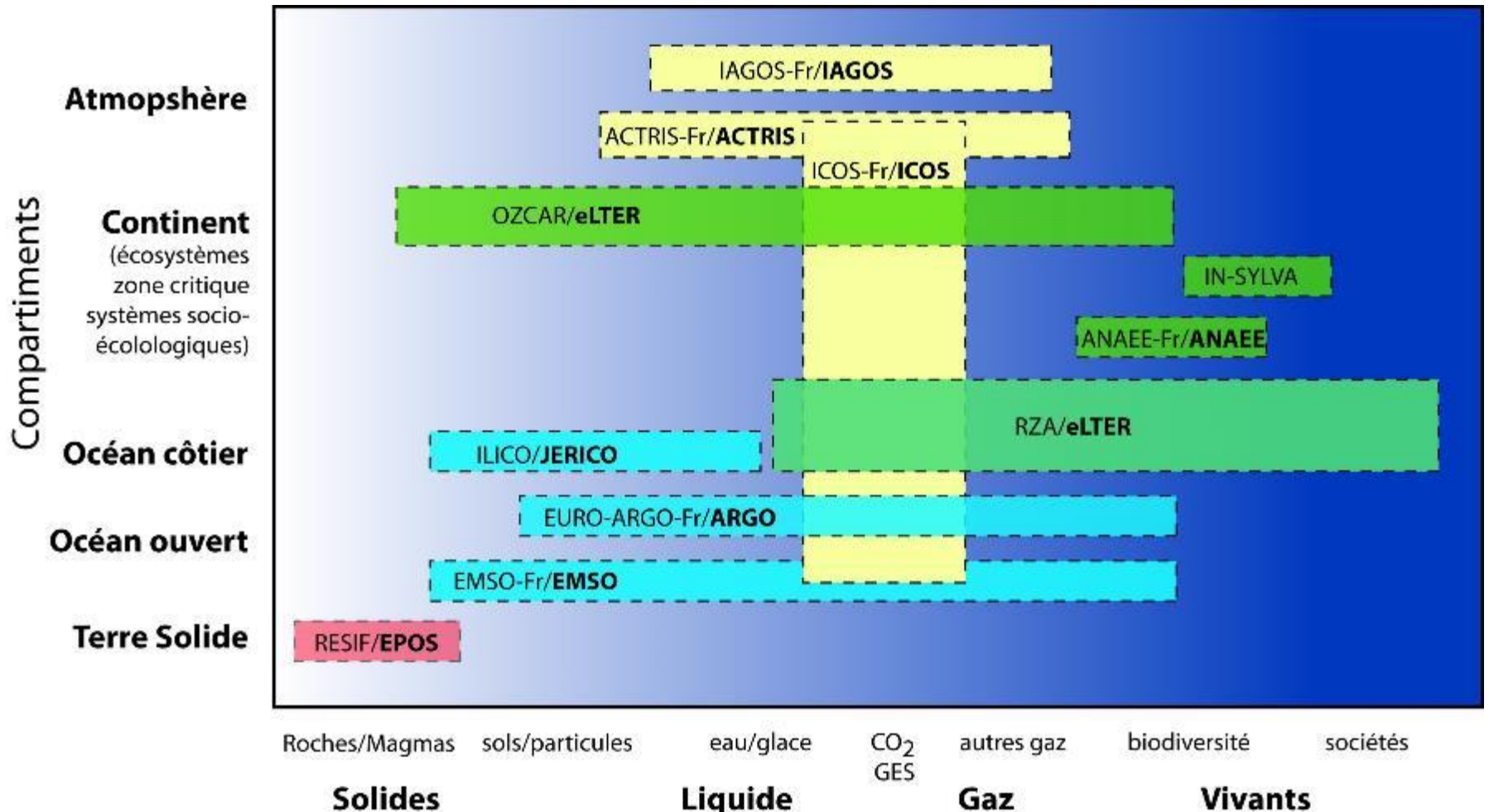


- OZCAR has the aim to give a better visibility to the French long-term observatories that have been funded by different National Research Organizations.

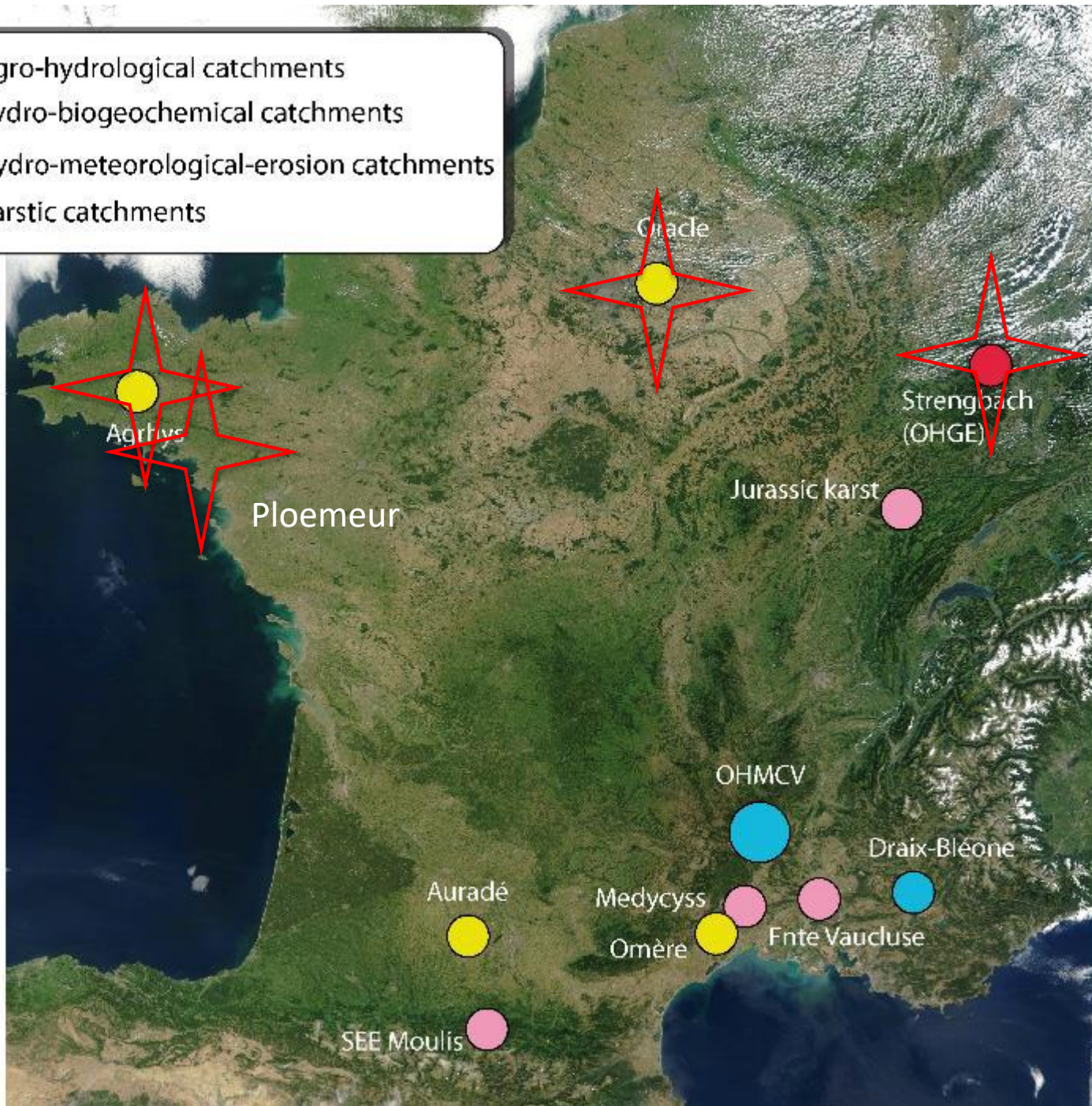
Covering large gradients



Positioning on a national, European and international scale



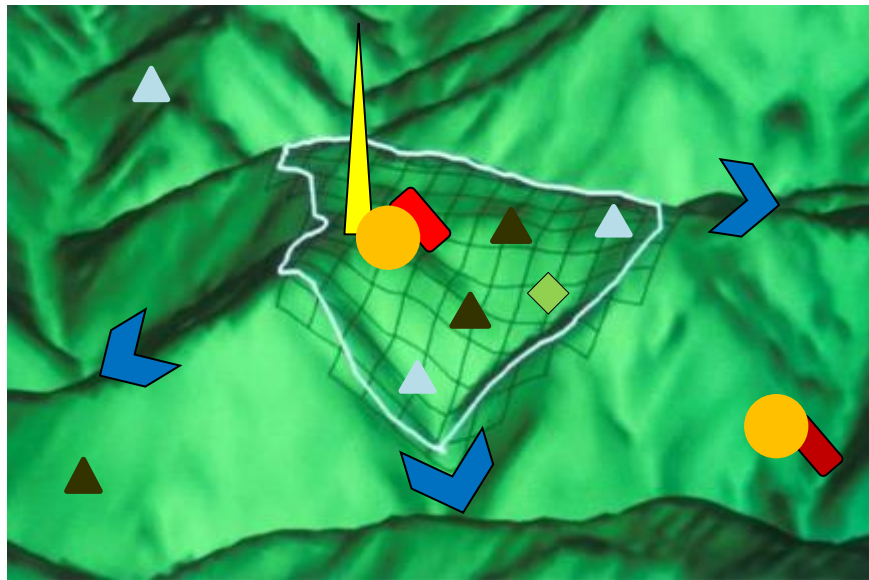
- Agro-hydrological catchments
- Hydro-biogeochemical catchments
- Hydro-meteorological-erosion catchments
- Karstic catchments



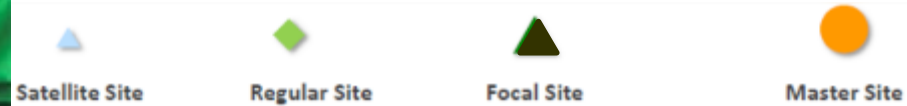
Sites where the CRITEX instruments were permanently installed

- CNRS*
- Universités*
- INRA*
- Irstea*
- IRD*

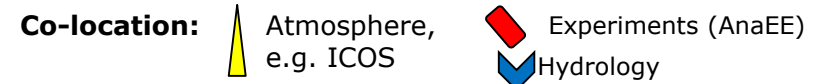
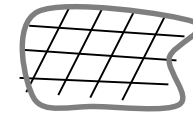
Towards French LTSER platforms



eLTER sites



LTSER platform



- eLTER platforms as **an opportunity** to foster synergies between disciplines (geosciences, biodiversity sciences, social sciences) & National RI
- More than dots on a map !
 - Transdisciplinary research & observation **long-term project**
 - Strong link with **stakeholders** and societal issues (*place-based research*)
 - A bottom-up process building on existing facilities/research success stories

Perspectives of evolution (in eLTER)

- Strengthening of the links with the RZA network and ecology via the TERRA FORMA project with sensor tests, 3 demonstration sites and then the deployment of the concept on a set of sites
- Co-construction of eLTER-France with the RZA
 - Definition of standard observations of ecosystems, the critical zone and socio-ecological systems
 - Definition of LTSER platforms combining observatories from the OZCAR and RZA IRs (and other IRs such as ICOS or AnaEE)
 - Definition of the hierarchy of sites according to eLTER (master/focal/regular/satellite/ and platforms
 - Definition of the services provided by eLTER (opening on the scientific community and on the socio-economic world)